

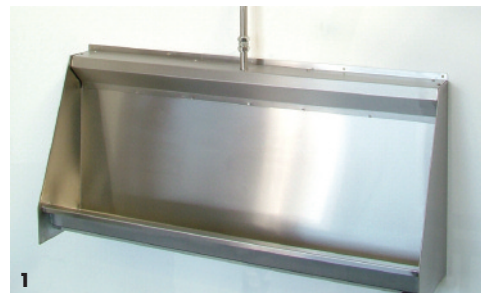
CONCEALED SPARGE WALL HUNG URINAL

SDS wall hung urinals are manufactured as one piece units from 304 grade stainless steel 1.2mm thick, with a smooth satin polished non reflective surface.

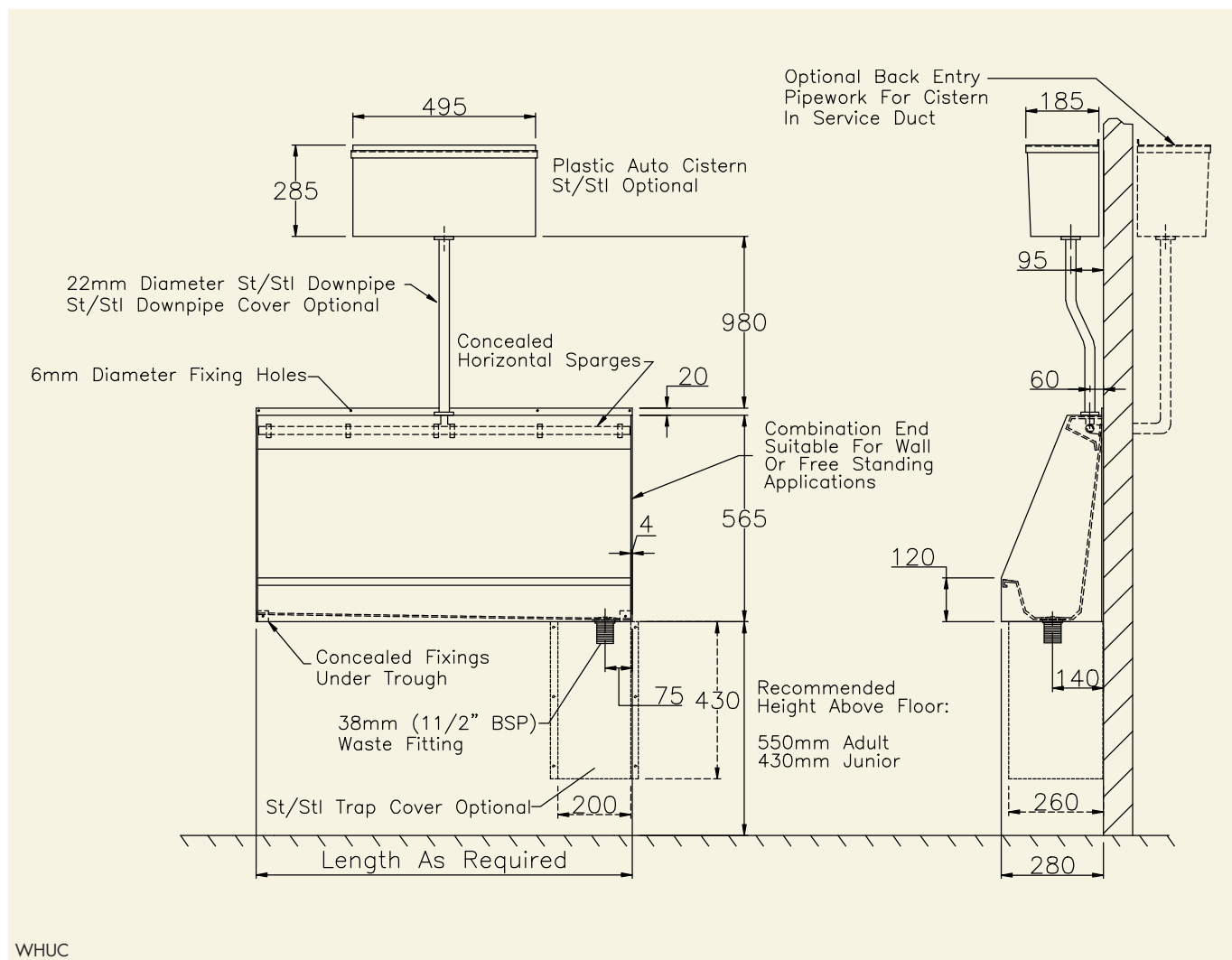
Flushing sparges on this model are concealed within a stainless steel cover for extra protection from damage in high risk areas.

Wall hung urinals are supplied as standard with combination ends suitable for exposed or side wall applications, a plastic automatic flushing cistern, stainless steel 22mm downpipe, 38mm (1 1/2" BSP) waste fitting, downpipe clip & stainless steel fixing screws

- Options**
- Non standard length
 - Non standard waste position
 - Back entry inlet connection
 - Stainless steel automatic flushing cistern
 - Stainless steel downpipe cover
 - Stainless steel corner trap cover
 - Stainless steel top hat trap cover
 - L or U shaped units



1 WHUC Concealed Sparge Wall Hung Urinal (Accessories see p4)



WHUC

PRODUCT DESCRIPTION

PRODUCT DESCRIPTION	ORDERING CODE
1200mm Concealed Sparge Wall Hung Urinal, L/H Outlet	WHUC1200L
1200mm Concealed Sparge Wall Hung Urinal, R/H Outlet	WHUC1200R
1200mm Concealed Sparge Wall Hung Urinal, Centre Outlet	WHUC1200C
1500mm Concealed Sparge Wall Hung Urinal, L/H Outlet	WHUC1500L
1500mm Concealed Sparge Wall Hung Urinal, R/H Outlet	WHUC1500R
1500mm Concealed Sparge Wall Hung Urinal, Centre Outlet	WHUC1500C
1800mm Concealed Sparge Wall Hung Urinal, L/H Outlet	WHUC1800L
1800mm Concealed Sparge Wall Hung Urinal, R/H Outlet	WHUC1800R
1800mm Concealed Sparge Wall Hung Urinal, Centre Outlet	WHUC1800C
2100mm Concealed Sparge Wall Hung Urinal, L/H Outlet	WHUC2100L
2100mm Concealed Sparge Wall Hung Urinal, R/H Outlet	WHUC2100R
2100mm Concealed Sparge Wall Hung Urinal, Centre Outlet	WHUC2100C
2400mm Concealed Sparge Wall Hung Urinal, L/H Outlet	WHUC2400L
2400mm Concealed Sparge Wall Hung Urinal, R/H Outlet	WHUC2400R