

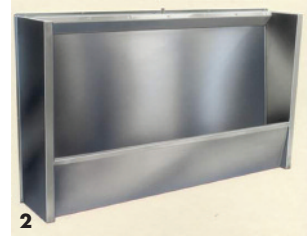
# FLOOR STANDING URINAL

SDS floor standing urinals are designed for situations where a trench cannot be cut in the floor, and are manufactured as one piece units from 304 grade stainless steel 1.2mm thick, with a smooth satin polished non reflective surface.

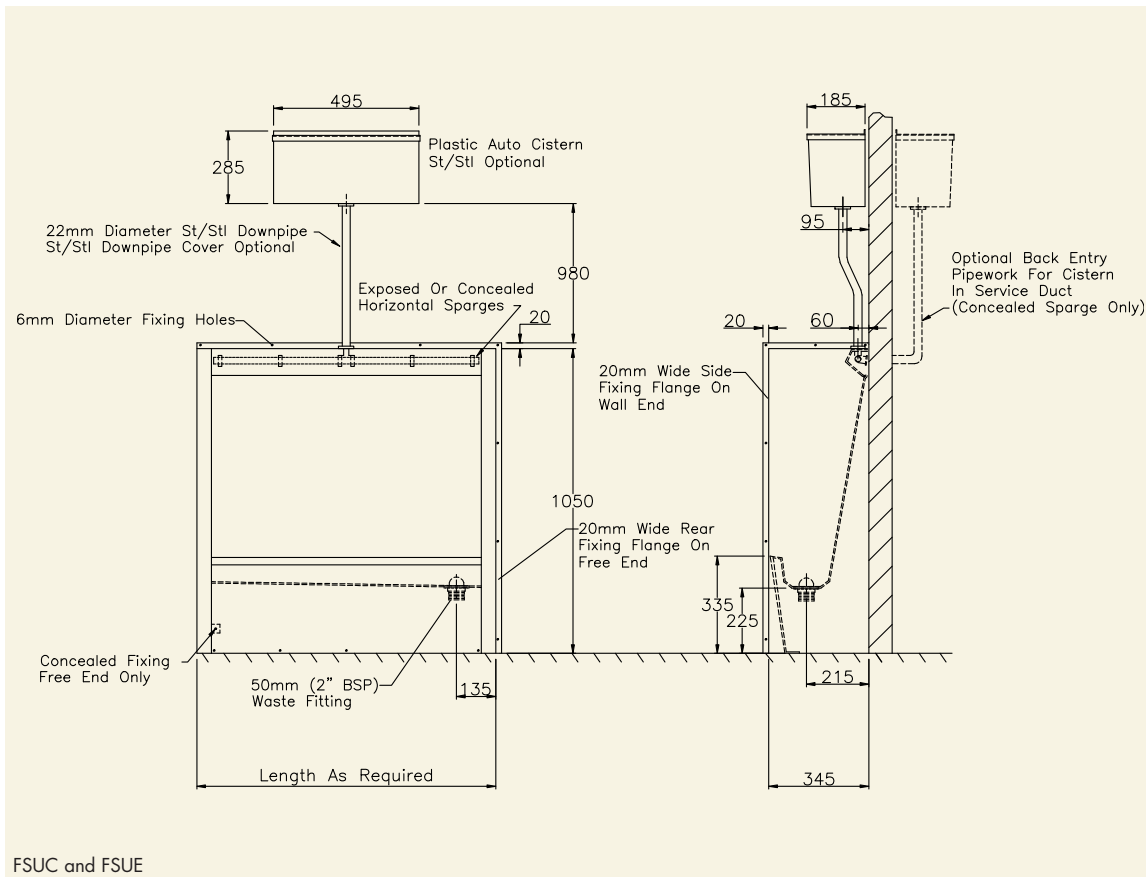
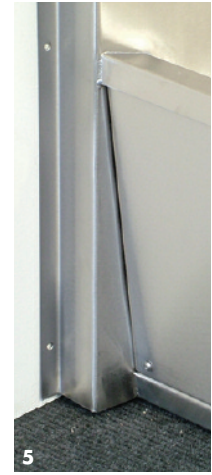
A full length removable panel is provided under the trough enabling easy access (via Allen headed screws) to the waste fitting and pipe work.

The horizontal flushing sparges have a top entry inlet as standard and are supplied exposed, or alternatively concealed within a stainless steel box for high risk areas.

Floor standing urinals are supplied with wall fixed or free standing ends, a plastic automatic flushing cistern, stainless steel down pipe, 50mm (2" BSP) waste fitting to left or right hand end, down pipe clip & stainless steel fixing screws.



- Options**
- Non standard waste position
  - Back or side entry inlet connection (concealed sparge model only)
  - Stainless steel automatic flushing cistern
  - Stainless steel downpipe cover
  - L or U shaped units



FSUC and FSUE

- 1 FSUE Exposed Sparge floor standing urinal
- 2 FSUC Concealed Sparge floor standing urinal
- 3 Plastic automatic flushing cistern
- 4 Optional stainless steel automatic flushing cistern
- 5 Floor standing urinal removable access panel

**PRODUCT DESCRIPTION**

- Exposed sparge floor recessed urinal
- Concealed sparge floor recessed urinal

**ORDERING CODE**

- FSUE
- FSUC

**Additional information required for ordering - add length required to the above ordering code followed by the appropriate letters for ends (left hand first) and outlet position**

- Overall length of urinal (In Metric or Imperial)
- Wall fixed end W
- Free standing end F
- Left hand outlet L
- Right hand outlet R

**ORDERING EXAMPLE**

To specify a concealed sparge floor standing urinal 1930mm long with a left hand free standing end, a right hand wall fixed end and a right hand outlet the ordering code would be:

**ORDERING CODE**

FSUC1930FWR

urinals