

CONCEALED SPARGE WALL HUNG URINAL

SDS wall hung urinals are manufactured as one piece units from 304 grade stainless steel 1.2mm thick, with a smooth satin polished non reflective surface.

Flushing sparges on this model are concealed within a stainless steel cover for extra protection from damage in high risk areas.

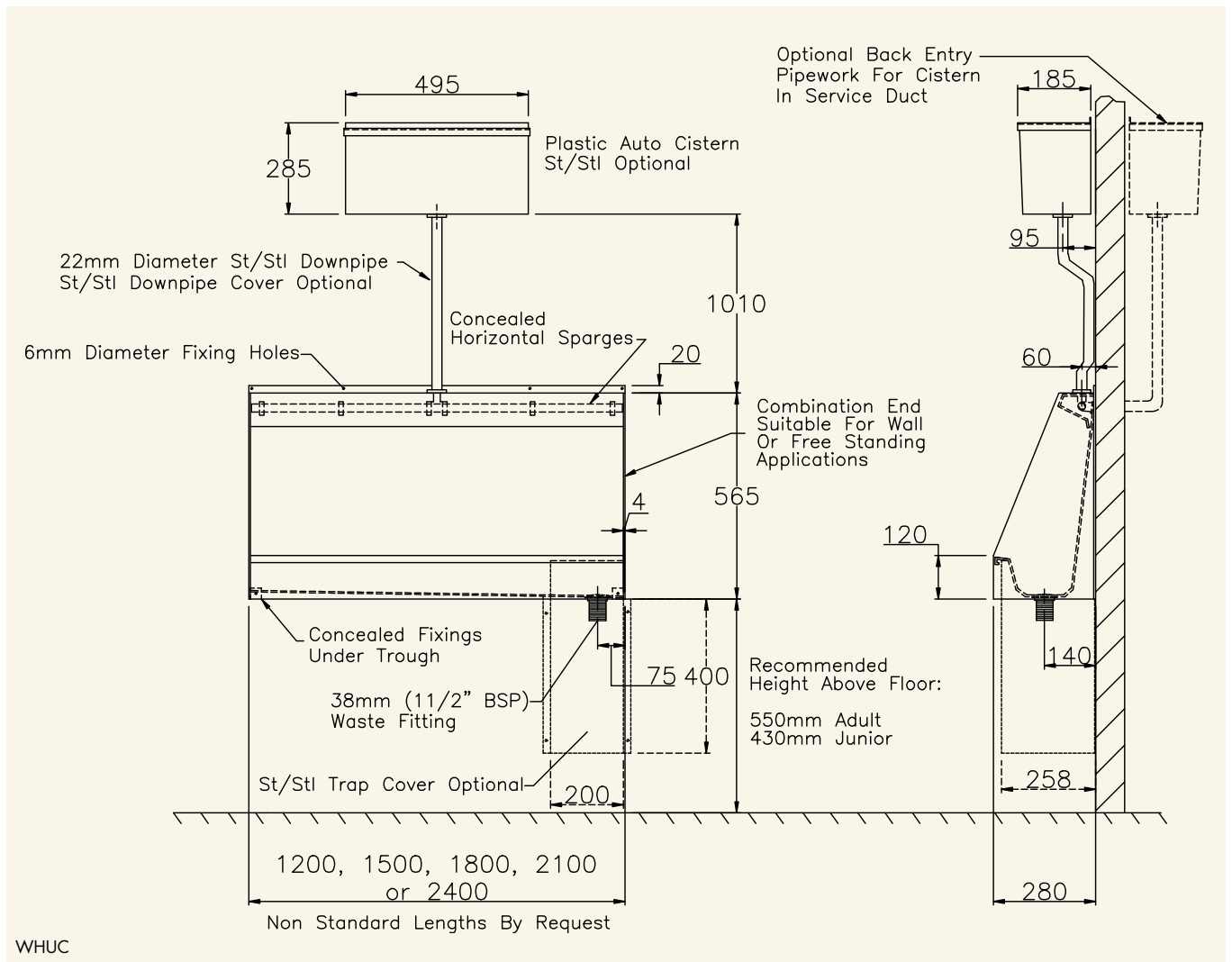
Wall hung urinals are supplied as standard with combination ends suitable for exposed or side wall applications, a plastic automatic flushing cistern, stainless steel 22mm downpipe, 38mm (1 1/2" BSP) waste fitting, downpipe clip & stainless steel fixing screws

Options

- Non standard length
- Non standard waste position
- Back entry inlet connection
- Stainless steel automatic flushing cistern
- Stainless steel downpipe cover
- Stainless steel corner trap cover
- Stainless steel top hat trap cover
- L or U shaped units



1 WHUC Concealed Sparge Wall Hung Urinal (Accessories see p3)



WHUC

PRODUCT DESCRIPTION

1200mm Concealed Sparge Wall Hung Urinal, L/H Outlet
1200mm Concealed Sparge Wall Hung Urinal, R/H Outlet
1200mm Concealed Sparge Wall Hung Urinal, Centre Outlet
1500mm Concealed Sparge Wall Hung Urinal, L/H Outlet
1500mm Concealed Sparge Wall Hung Urinal, R/H Outlet
1500mm Concealed Sparge Wall Hung Urinal, Centre Outlet
1800mm Concealed Sparge Wall Hung Urinal, L/H Outlet
1800mm Concealed Sparge Wall Hung Urinal, R/H Outlet
1800mm Concealed Sparge Wall Hung Urinal, Centre Outlet
2100mm Concealed Sparge Wall Hung Urinal, L/H Outlet
2100mm Concealed Sparge Wall Hung Urinal, R/H Outlet
2100mm Concealed Sparge Wall Hung Urinal, Centre Outlet
2400mm Concealed Sparge Wall Hung Urinal, L/H Outlet
2400mm Concealed Sparge Wall Hung Urinal, R/H Outlet

ORDERING CODE

WHUC1200L
WHUC1200R
WHUC1200C
WHUC1500L
WHUC1500R
WHUC1500C
WHUC1800L
WHUC1800R
WHUC1800C
WHUC2100L
WHUC2100R
WHUC2100C
WHUC2400L
WHUC2400R

Urinals