

# FLOOR STANDING URINAL

SDS floor standing urinals are designed for situations where a trench cannot be cut in the floor, and are manufactured as one piece units from 304 grade stainless steel 1.2mm thick, with a smooth satin polished non reflective surface.

A full length removable panel is provided under the trough enabling easy access (via Allen headed screws) to the waste fitting and pipe work.

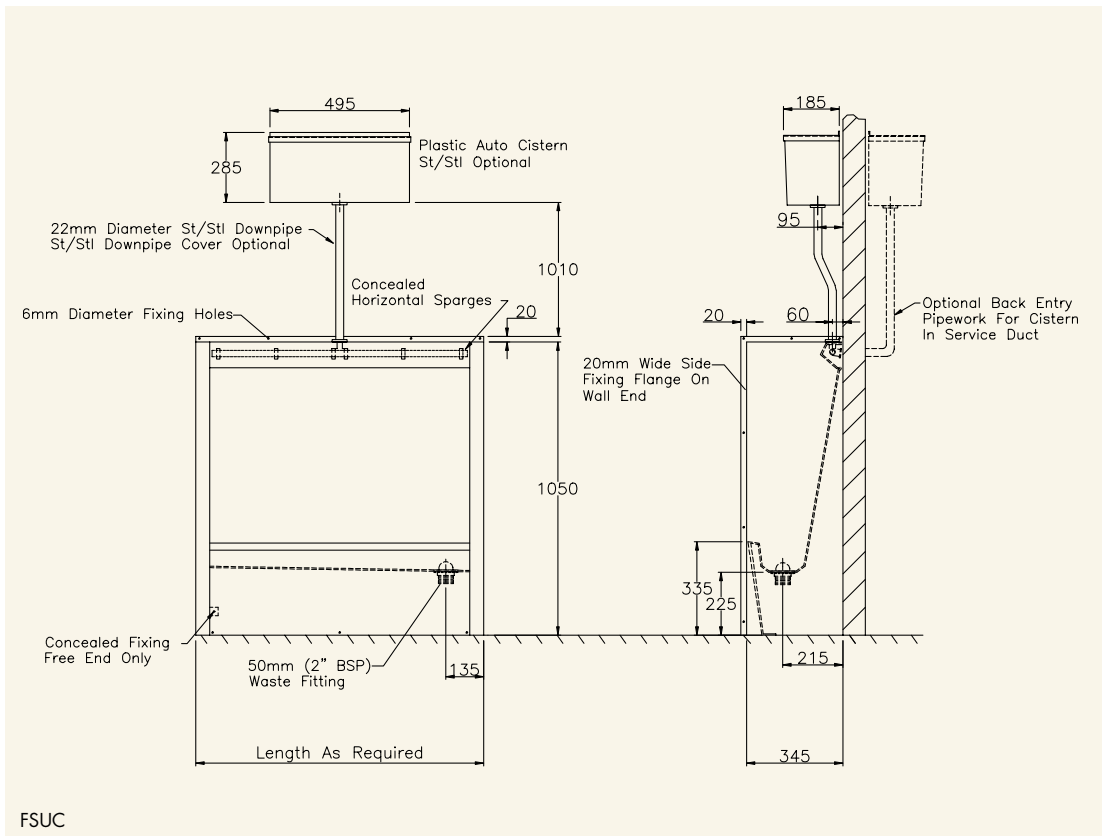
The horizontal flushing spargers have a top entry inlet as standard and are concealed within a stainless steel box.

Floor standing urinals are supplied with wall fixed or free standing ends, a plastic automatic flushing cistern, stainless steel down pipe, 50mm (2" BSP) waste fitting to left or right hand end, down pipe clip & stainless steel fixing screws.



**Options**

- Non standard waste position
- Back or side entry inlet connection
- Stainless steel automatic flushing cistern
- Stainless steel downpipe cover
- L or U shaped units



- 1 FSUC Concealed Sparge floor standing urinal
- 2 Plastic automatic flushing cistern
- 3 Optional stainless steel automatic flushing cistern
- 4 Floor standing urinal removable access panel

FSUC

**PRODUCT DESCRIPTION**

Concealed sparge floor standing urinal

**ORDERING CODE**

FSUC

**Additional information required for ordering - add length required to the above ordering code followed by the appropriate letters for ends (left hand first) and outlet position**

Overall length of urinal	(In Metric or Imperial)
Wall fixed end	W
Free standing end	F
Left hand outlet	L
Right hand outlet	R

**PRODUCT DESCRIPTION**

To specify a concealed sparge floor recessed urinal 1200mm long with a left hand wall fixed end, a right hand free standing end and a left hand outlet the ordering code would be:

**ORDERING CODE**

FSUC1200WFL

urinals