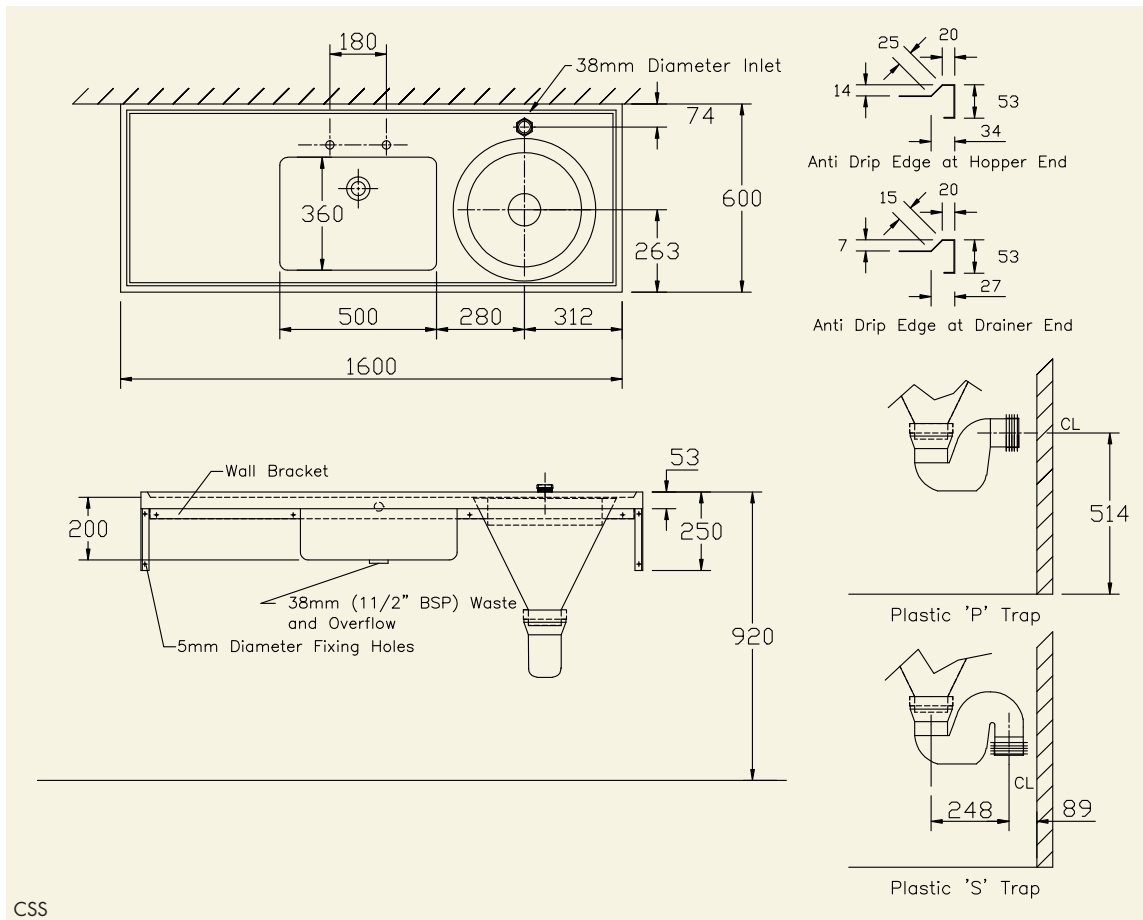


COMBINED SINK AND HOPPER

The SDS combined sink and hopper is manufactured from 304 grade stainless steel and is supplied with a plastic P or S trap, 2 tap holes behind the bowl, a 38mm (1 1/2" BSP) waste/overflow fitting and a top entry flush connection.



1 Combined Sink and Hopper
2 Integral Sink Bowl
3 Flushing Hopper



CSS

PRODUCT DESCRIPTION

- Combined sink and hopper, left hand drainer, plastic P trap
- Combined sink and hopper, right hand drainer, plastic P trap
- Combined sink and hopper, left hand drainer, plastic S trap
- Combined sink and hopper, right hand drainer, plastic S trap

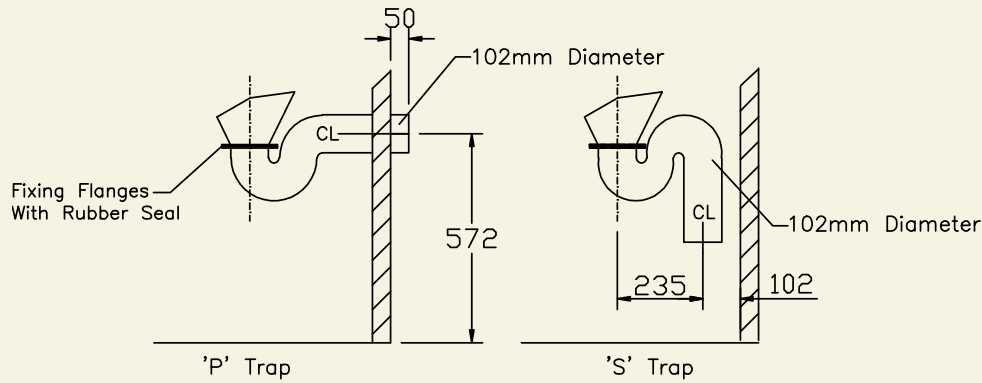
ORDERING CODE

- CSSHLP
- CSSHRP
- CSSHLS
- CSSHRS

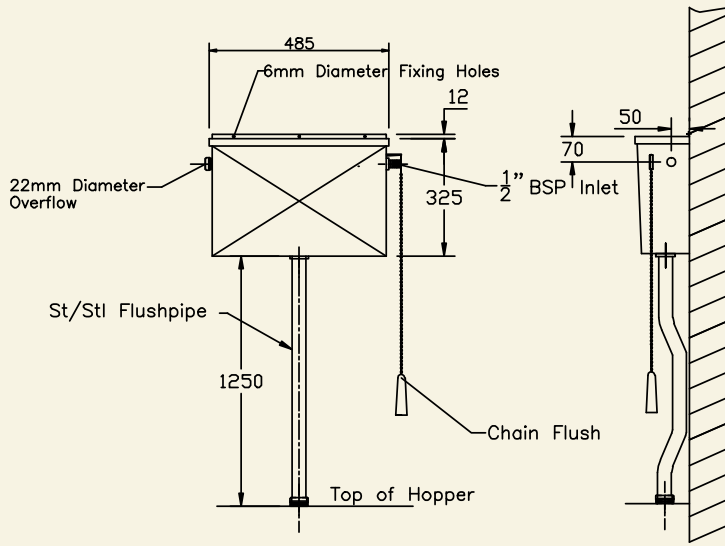
hospital

COMBINED SINK AND HOPPER

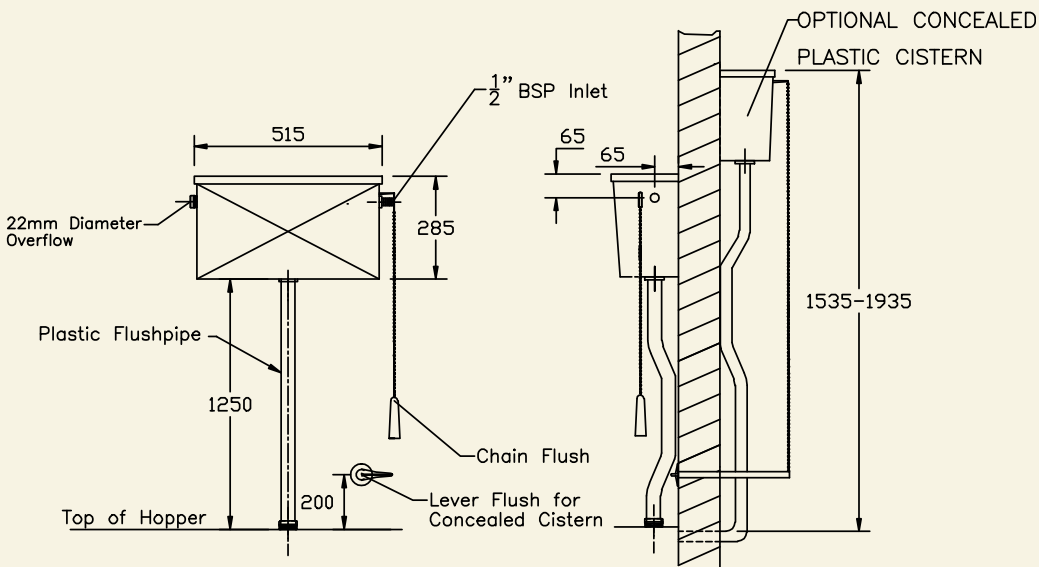
continued



OPTIONAL ST/STL TRAPS



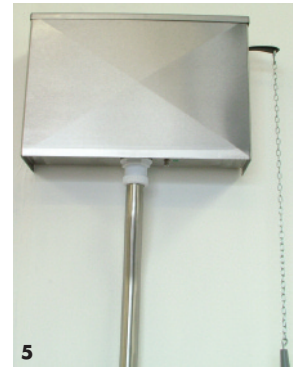
OPTIONAL EXPOSED ST/STL CISTERN



OPTIONAL EXPOSED PLASTIC CISTERN



4



5



6

Options

- Front support legs (Pair)
- Stainless steel P or S trap
- Back entry hopper flush
- No tap holes behind bowl
- Plastic cistern and flushpipe
- Stainless steel cistern and flushpipe

4 Front Support Leg

5 Optional Stainless Steel Cistern

6 Optional Plastic Cistern

hospital