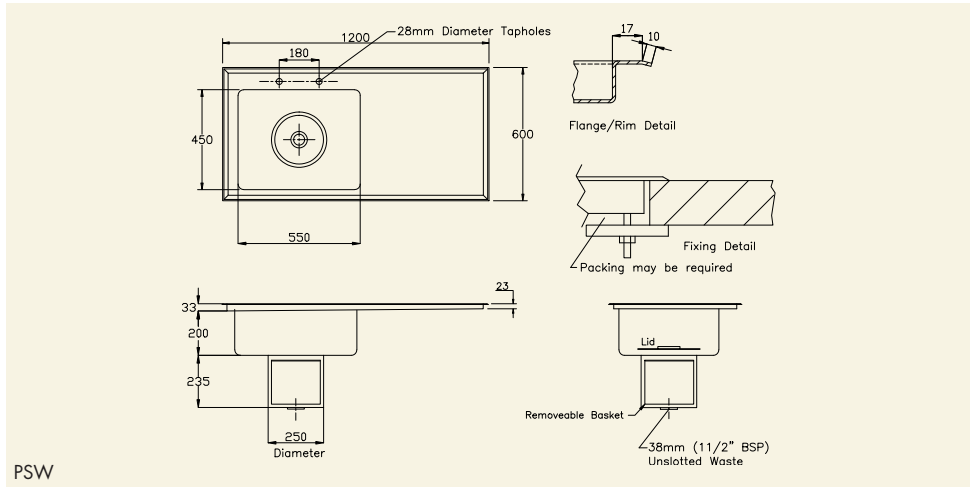
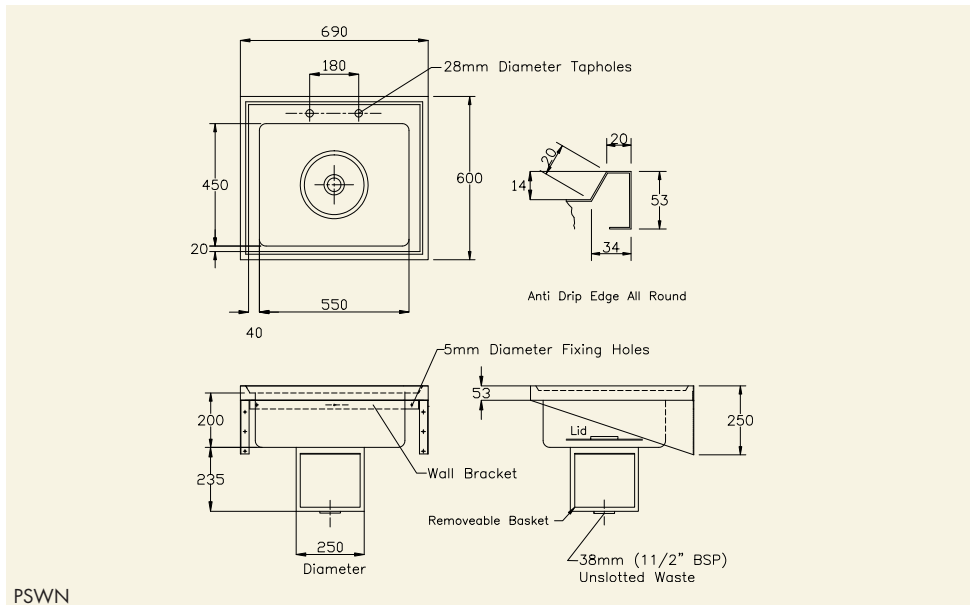


# PLASTER SINKS

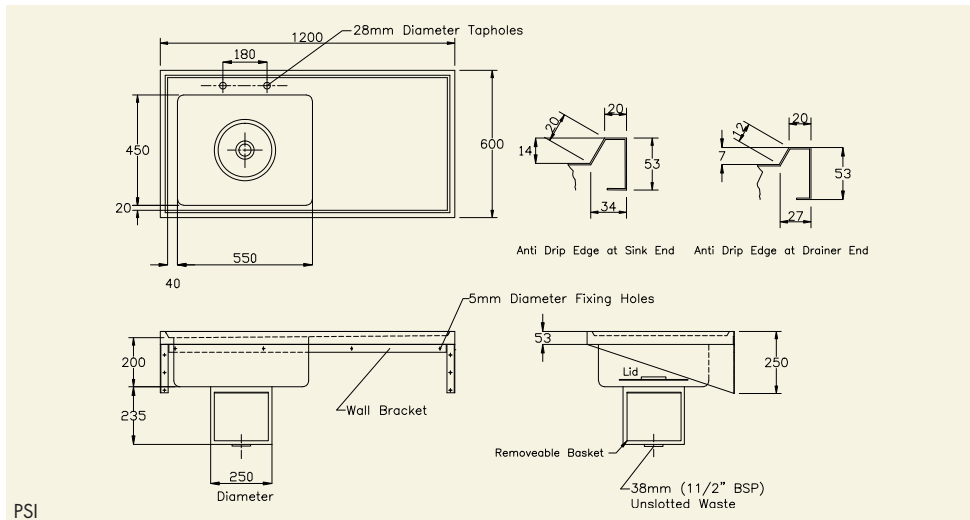
Plaster sinks are manufactured from 304 grade stainless steel and incorporate 2 tap holes and an integral bowl with plaster sump. Wall mounted models feature cantilever support brackets, the inset version is supplied with fixing clips. Also supplied is a removable plaster reclaim basket, plaster sump lid and 38mm (1 1/2" BSP) waste fitting.



PSW



PSWN



PSI

- Options**
- Front support legs (on wall mounted models)
  - No tap holes

- 1 Plaster Sink with Drainer
- 2 Inset Plaster Sink with Drainer
- 3 Plaster Sink without Drainer
- 4 Optional Front Support Leg

hospital

**PRODUCT DESCRIPTION**

- Plaster sink, wall mounted, left hand drainer
- Plaster sink, wall mounted, right hand drainer
- Plaster sink, wall mounted, no drainer
- Plaster sink, inset, left hand drainer
- Plaster sink, inset, right hand drainer

**ORDERING CODE**

- PSWDL
- PSWDR
- PSWN
- PSIL
- PSIR